



CUSHMAN &
WAKEFIELD



CITY GATE PARK

MAHON, CORK

50,991 SQ FT GRADE A OFFICE SPACE TO LET

CITY GATE PARK



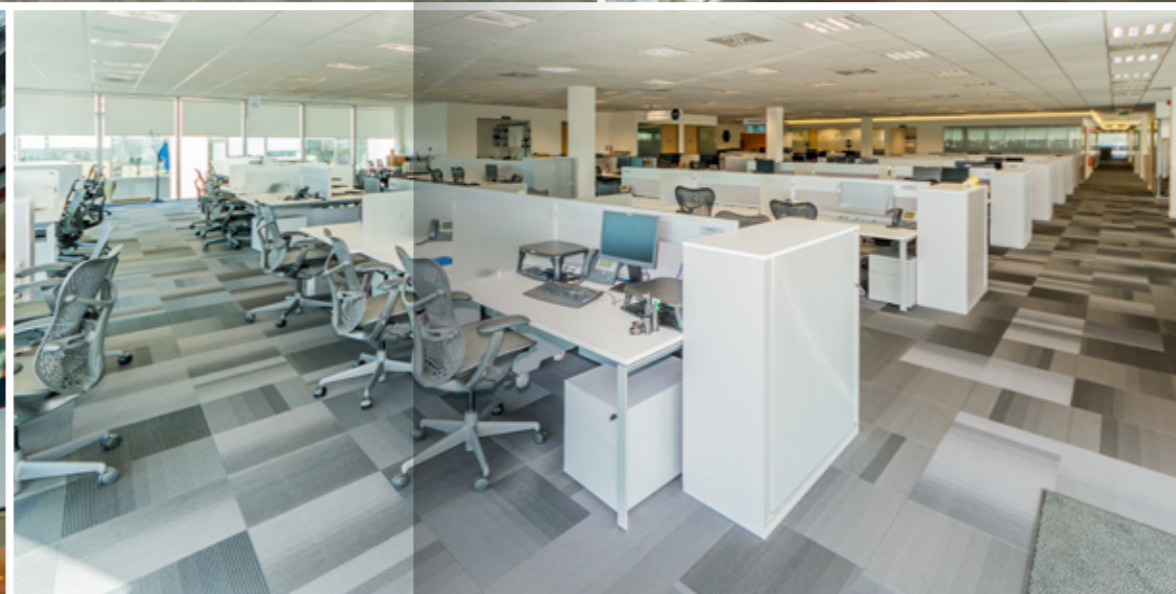
The modern design & on-site amenities at City Gate Park will attract the best talent

KEY LOCATION

-  50,991 sq ft across 2 floors
-  Large, open plan floor plates with dual aspect natural light
-  Amenities include a gym, health food café & Starbucks
-  Located next to Mahon Point Shopping Centre & Retail Park, Mater Private & VHI Swiftcare Clinic
-  Basement car parking including visitor spaces

NEIGHBOURING OCCUPIERS





THE OFFICES

City Gate Park offers one of the most prestigious suburban office solutions in Cork. Accommodation extends to 50,991 sq ft / 4,737 sq m across the first and second floors of Block 1 combined, which can be let in one lot or sub-divided, as required.

The offices are fitted out to the highest standard and the building is designed to provide excellent levels of natural light throughout the floor plates, which are open plan providing efficient occupancy levels. The current turn-key fit out includes the following:

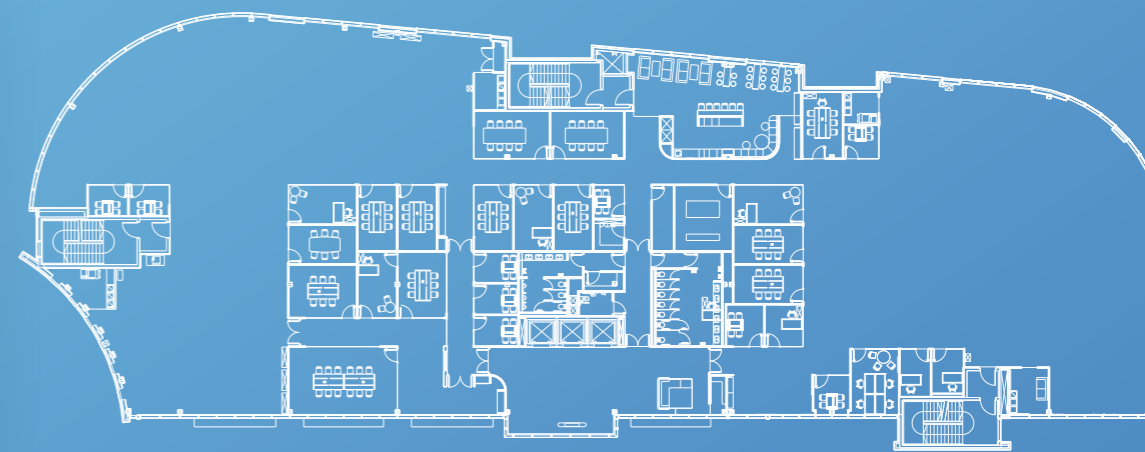
- > Generous floor to ceiling heights
- > Suspended ceilings & raised access floors
- > Air conditioning
- > LED Lighting
- > Security controlled access system
- > Small and large meeting rooms
- > Canteens and tea stations
- > Large lobbies / reception areas
- > Lift access
- > Underground Parking

An office space for productivity, comfort and well-being with a gym and natural foods café

CONNECTIVITY



FLOOR PLANS



FIRST FLOOR
24,382 SQ FT / 2,265 SQ M GIA



SECOND FLOOR
26,609 SQ FT / 2,4772 SQ M GIA



CITY GATE PARK



6 Lapps Quay, Cork
Cork@cushwake.ie
+353 (0)21 427 5454

cushmanwakefield.ie



LEASE DETAILS

New lease available

VIEWINGS

Strictly by appointment



PETER O'FLYNN

peter.oflynn@cushwake.ie
+353 (0) 21 464 8502

SIOBHÁN YOUNG

siobhan.young@cushwake.ie
+353 (0) 21 464 8524

A full copy of our general brochure conditions can be viewed on our website at www.cushmanwakefield.ie/terms, or can be requested from your local Cushman & Wakefield office. We strongly recommend that you familiarise yourself with these general conditions. While care has been taken to ensure that information contained in Cushman & Wakefield publications is correct at the time of publication, changes in circumstances after the time of publication may impact on the accuracy of this information. PSRA Registration Number: 002607.